



# FlexSpace Solution

[WWW.FLEXSPACEOFFICE.COM](http://WWW.FLEXSPACEOFFICE.COM)

We revolutionize the open office by providing flexible,  
dynamic workspaces

## Product

Partition Pod Cube

**SPACE SOLUTION**



# FLEXSPACE

We revolutionize the open office by providing flexible, dynamic workspaces to increase productivity.



## ABOUT FlexSpace

---

FlexSpace revolutionizes the open office with state-of-the-art spaces designed to enhance productivity, creativity, and collaboration. FlexSpace offers a turnkey and flexible solution, which upgrades rooms to suit a variety of needs. We are a team of experts who strive to produce the highest-quality and most affordable products on the market.



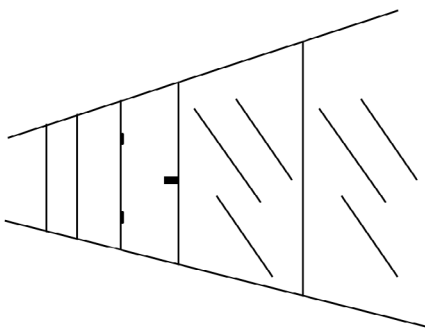


# On-Demand Smart & Flexible Workspaces.



# CONTENTS

## Partition



### Metallo

Brief introduction	P.8-9
Double glass panel	P.10-11
Double solid panel	P.12-13
Technical data	P.14
Color options	P.15
Construction detail	P.16-17

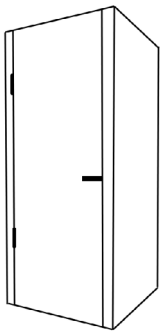
### Pano

Brief introduction	P.18-19
Single glass	P.20-21
Double glass	P.20-21
Technical data	P.22
Color options	P.23
Construction detail	P.24-25

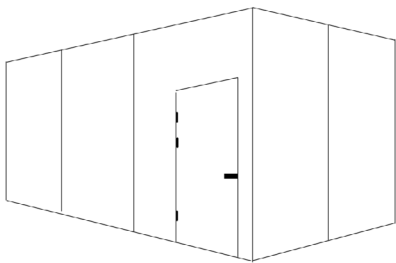
### Door

Brief introduction	P.26-27
Glass door	P.28-29
Solid door	P.28-29
Technical data	P.30
Color options	P.31
Construction detail	P.32-33

## Pod



Brief introduction	P.34-35
Features	P.36-37
S pod	P.38
M pod	P.39
Technical data	P.40-43
Color options	P.44-45



## Cube

Brief introduction	P.46-49
Features	P.50-51





# Metallo

## MODULAR PARTITION

Modular partitions are a custom-fit system that include a wide range choice of glass and mesh panels and components to best suit your space needs. Partition frames are made of steel and come in a variety of heights, widths, colors and finishes to best compliment your office design. Partitions are typically installed to be fully demountable meaning that once installed they can be adjusted to meet changing workspace needs. They can be installed in a multi-tier configuration to maximize usable height and customized to fit preexisting structural components of a space.





/ 1



/ 2



/ 3



## 1. DOUBLE GLASS

Glass wall systems open up the workspace by bringing in more light and optimizing the layout with hybrid private and public workspaces.

## 2. DOUBLE GLASS WITH BLINDS

Glass can be custom-equipped with built-in horizontal metal blinds, with manual or electric dimming, which give users privacy on-demand.

## 3. DOUBLE BACK PAINTED GLASS

Add depth to your space with painted backdrops which can double as dry-erase marker boards for team brainstorm sessions and collaboration.



Modular partitions are the most economical and flexible of the partition systems as they require little to no setup time and can be adjusted with ease. They create multiple versatile spaces within a larger open space.



/ 4

#### 4. DOUBLE STEEL PANEL

Double steel panels offer the best in soundproofing, fire resistance and durability, especially when supported with plasterboard. Moreover, steel panels are fully-customizable as they can be covered with a wide array of fabrics and leathers.



# TECHNICAL SPECIFICATIONS

Steel partitions are most commonly used to divide workspaces, add an office space to a warehouse, or install secure storage or workshop spaces. Steel partitions often compliment new building renovations while offering an affordable, flexible, and hassle-free space solution when compared to construction.

<b>Profile</b> Upright Pillar: Steel Section Ceiling and Floor U-channels:1mm Galvanized steel Section	<b>Solid panel</b> 1.0mm galvanized steel panel with plasterboard backing or honeycomb 15mm melamine finished particleboard panels 15mm Veneer finished particleboard panels Fabric covered steel or particleboard panels 50kgs/80kgs/m3 rock wool between two panelling	<b>Glass panel</b> Double glazed panels in 6 or 8 mm thickness in monoblock or bi-block aluminium sections, with beading or flush glass Glass options: tempered glass, laminated glass, fireproof glass
<b>Standard dimension</b> Wall Thickness: 100mm Height: 3500mm Width: Solid panel 900/1000/1100mm,glass 900/1000/1100mm/1200mm Other sizes in height or width after consulation Weight: 35/48Kgs/m2	<b>Finishes</b> Surface Treatments: Metal panel in powder coating approx 60µm thickness/PVC Treatment 0.08mm Colors: As per FlexSpace's color chat. Other colours possible after consultation Glazing: Various of options is available, such as sandblasting, film, painted glass, smart glass.	
<b>Installation</b> TOLERANCES: Floor:+/- 15mm Ceiling:+/- 15mm Adjustable floor track for easy adjusting for tolerance	<b>Acoustic</b> Standard ISO717 Solid panel: metal panel : Rw=50dB Solid Panel: Chipboard Panel: Rw=46dB Glass Panel: from 41dB to 48db	<b>Fire</b> Fire Resistance to ASTM E84 Solid: EI120 Glazed: EI60

Products specifications are subject to change. Please consult latest catalogue for up-to-date details.

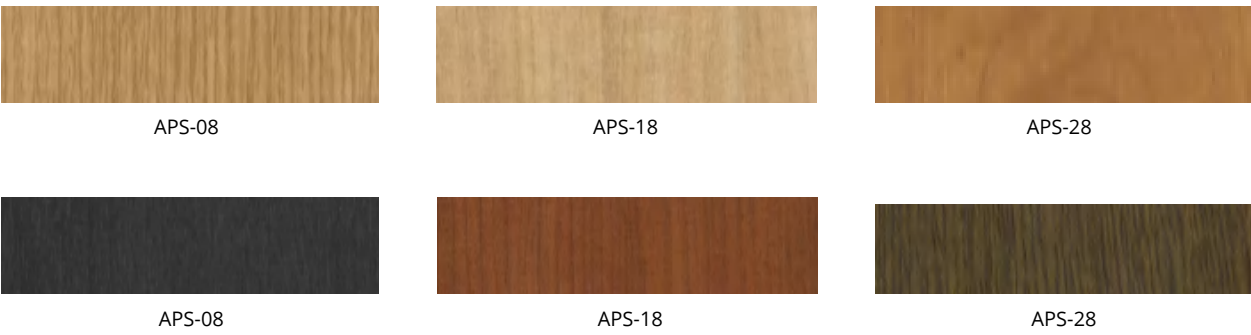
# COLOR OPTIONS

Choose from a wide range of colors to match company colors, add depth to the space or discreetly blend in with existing infrastructure.

## Pure color



## PVC surface

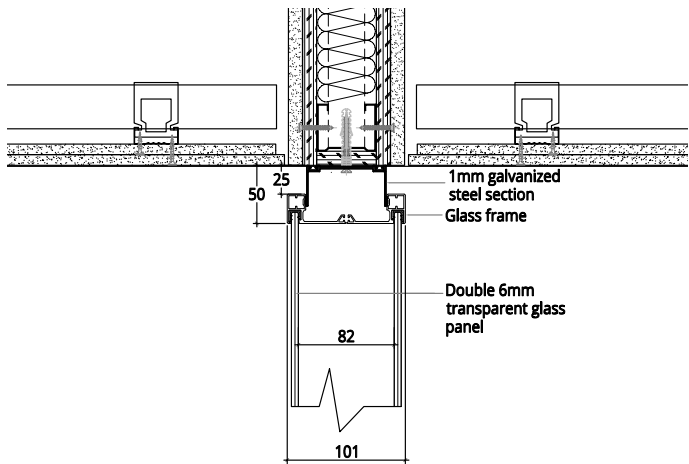


Colors above are for reference only. Printed colors may differ, please consult the actual products.

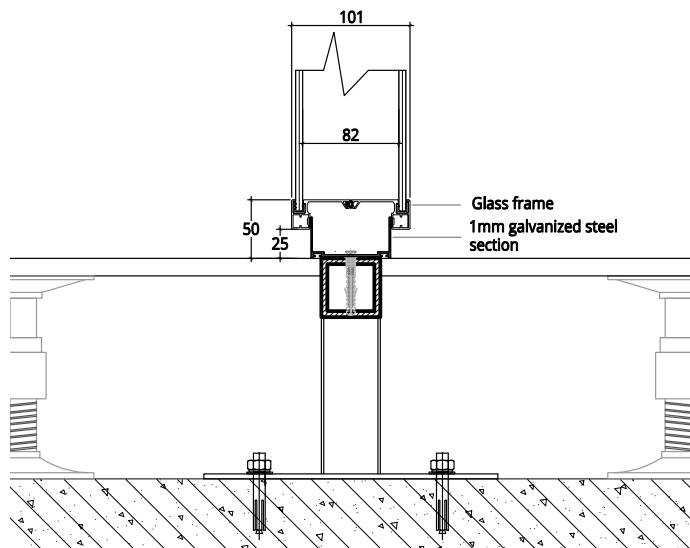


# CONSTRUCTION DETAILS

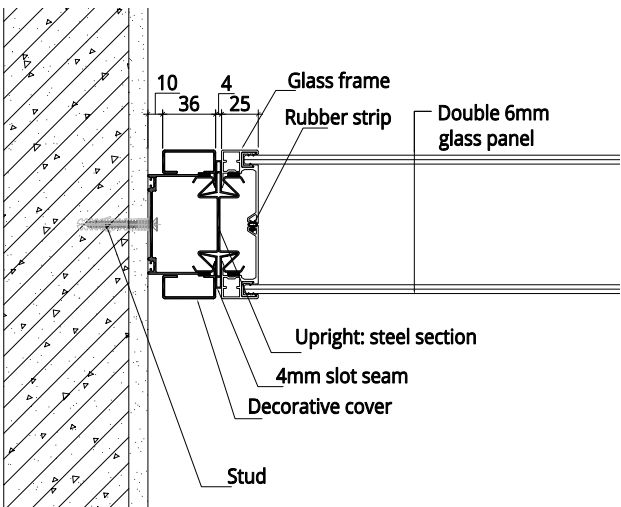
## CEILING ATTACHMENTS



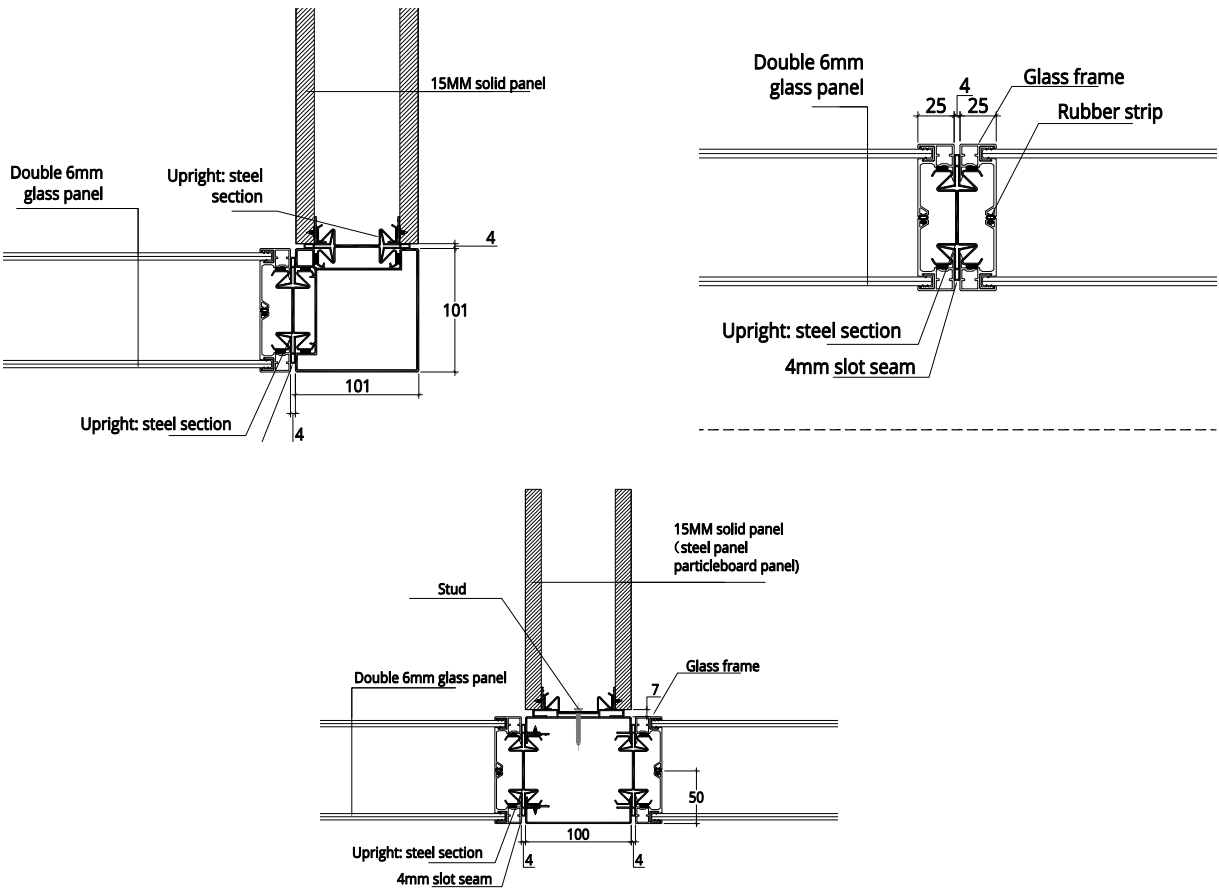
## FLOOR ATTACHMENTS



## WALL ATTACHMENTS



## JOINT ATTACHMENTS







Frameless glass partitions divide the open office while bringing light and modernity to the space. They are designed with minimal components to ensure ease of use, speedy installation and structural integrity.

Available with single or double pane glass, frameless glass partitions offer the best in hybrid public and private spaces in the workspace. They create a open atmosphere with an abundance of natural light while providing privacy and noise reduction to encourage concentration.

**PANO**

SOLUTION

SPACE

2021 EDITION



INTERIORS  
X  
PARTITION





/ 1

## 1. PANO-SINGLE GLAZED

Frameless single glass partitions are sleek and modern glass walls which create private spaces while maintaining an open office feel.



/ 2

## 2. PANO-DOUBLE GLAZED

Double glass partitions provide the same benefits as single glass systems in regards to light transference, optimizing visual space and collaboration, while offering additional privacy through shielded zones.



# TECHNICAL SPECIFICATIONS

Achieve a truly light-filled look with seamless glass and minimal visible components (3M transparent strip or slime aluminium glazing joints).

<b>Profile</b>  Aluminium profile: 6063-T5 aluminium alloy, thickness 1.0-3.0mm Ceiling and Floor U-channels: 1mm Galvanized steel Section	<b>Solid panel</b>  1.0mm galvanized steel panel with plasterboard backing or honeycomb 15mm melamine finished particleboard panels 15mm Veneer finished particleboard panels Fabric covered steel or particleboard panels 50kgs/80kgs/m3 rock wool between two panelling	<b>Glass panel</b>  Double glazed: 12mm+10mm glass Single glazed: 12mm glass Glass options: tempered glass, laminated glass, fireproof glass
<b>Standard dimension</b>  Wall Thickness: Single glazed 45mm, Double glazed 100mm Max Height: 3000mm Max Width: Solid panel: 931mm; Glass panel: 1100mm Other sizes in height or width after consultation	<b>Finishes</b>  Surface Treatments: Metal panel in powder coating approx 60µm thickness/PVC Treatment 0.08mm Colors: As per FlexSpace's color chat. Other colours possible after consultation Glazing: Various of options is available, such as sandblasting, film, painted glass, smart glass.	
<b>Installation</b>  TOLERANCES: Floor:+/- 15mm Ceiling:+/- 15mm Adjustable floor track for easy adjusting for tolerance	<b>Acoustic</b>  Standard ISO717 Double glazed: up to 48dB Single glazed: up to 30dB	<b>Fire</b>  Fire resistance is available with fireproof glass

Products specifications are subject to change. Please consult latest catalogue for up-to-date details.

## COLOR OPTIONS

Choose from a range of colors to match interior design, add depth to the space or discreetly blend in with existing infrastructure.

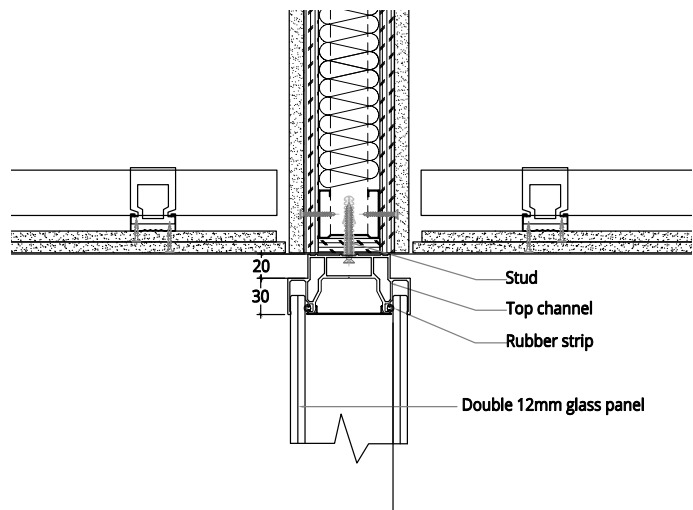
### Pure color

		
APS-08	APS-18	APS-28
		
APS-08	APS-18	APS-28

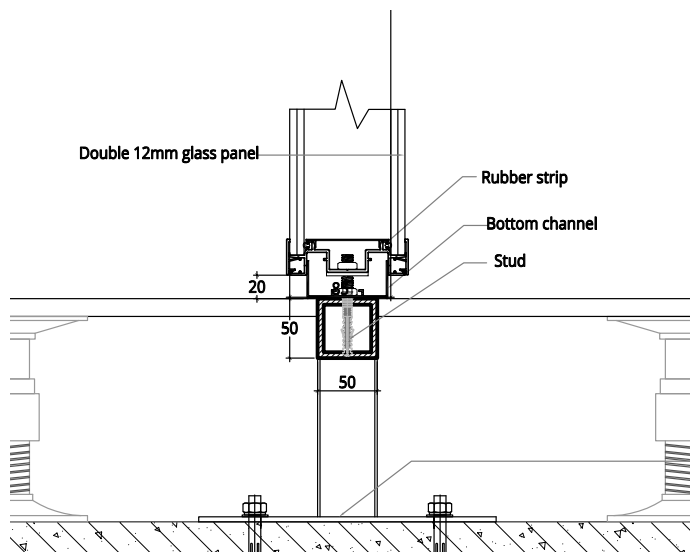
Colors above are for reference only. Printed colors may differ, please consult the actual products.

# CONSTRUCTION DETAILS

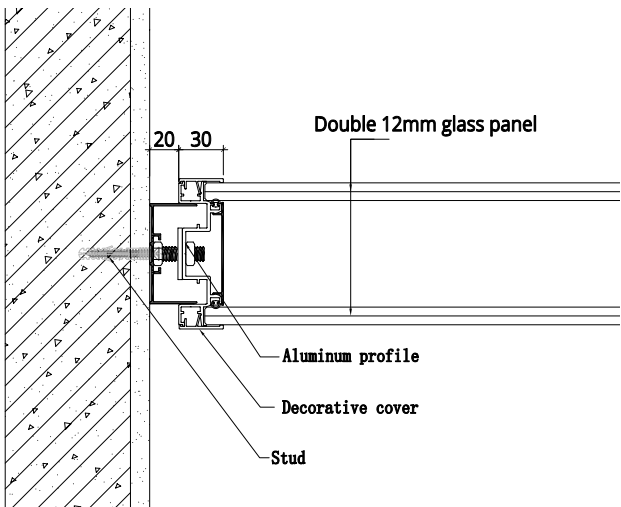
## CEILING ATTACHMENTS



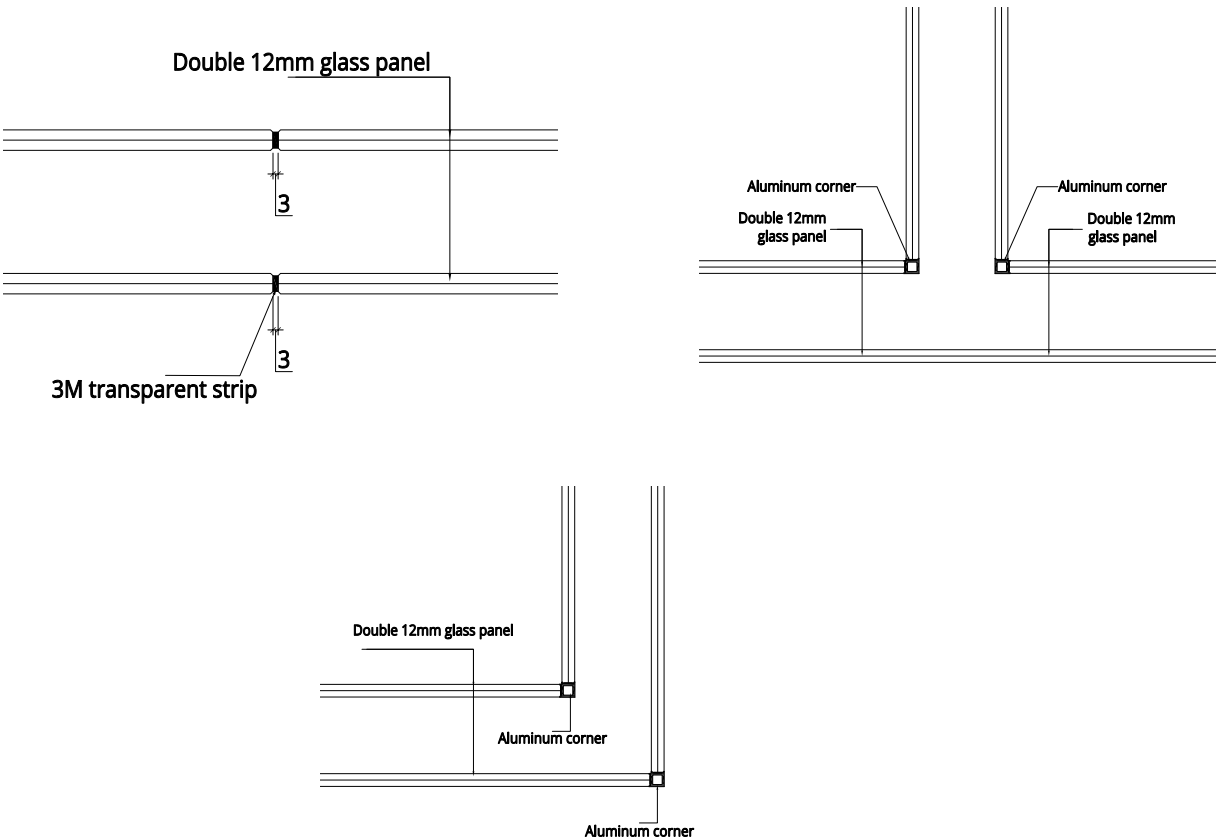
## FLOOR ATTACHMENTS



## WALL ATTACHMENTS



## CONNECTION ATTACHMENTS





# DOOR



FlexSpace's partition walls can be designed with a wide variety of door options: sliding, hinged or pivoting. Doors are available in glass, wood or steel, framed or frameless and with full customization, such as locking or non-locking, and with or without door closing or door control hardware.

FlexSpace's door hardware is easily adapted to complement card reader systems, such as magnetic lock, electric strike, and so on.



1. SWING GLASS DOOR

Swing doors can be opened inwards and outwards with full swivel. Internal swing glass doors, popular in industrial interiors, are now finding unprecedented popularity in office interiors.

/ 1



2. SLIDING GLASS DOOR

Engineered for smooth and easy operation, our sliding glass doors combine timeless design with tried-and-true performance.

/ 2



3. SOLID DOOR

Solid doors are available in metal and laminated, providing an affordable alternative to internal wood doors, with the added style benefits. The doors are practical, high-quality, and come in a variety of colours, styles, and designs.

/ 3





# TECHNICAL SPECIFICATIONS

## FRAMELESS GLASS DOOR

Door thickness: 55mm  
Material: aluminium frame, tempered glass  
Standard hardware: lock, handles, hinges  
Optional hardware: other design handles or required brand



## SLIDING GLASS DOOR

Glass thickness: 12mm  
Material: tempered glass/laminated glass  
Standard hardware: lock, big handle, track and wheels  
Optional hardware: other design handles or required brand



## STEEL DOOR

Door thickness: 58mm  
Material: steel, aluminium honeycomb, aluminium structure  
Standard hardware: handles, lock, hinges  
Optional hardware: other design handles or required brand



# COLOR OPTIONS

Choose from a wide range of colors to match company colors, add depth to the space or discreetly blend in with existing infrastructure.

## Pure color



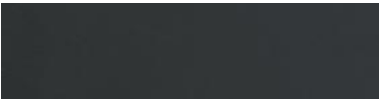
APS-08



APS-18



APS-28



APS-08



APS-18



APS-28

## PVC surface



APS-08



APS-18



APS-28



APS-08



APS-18



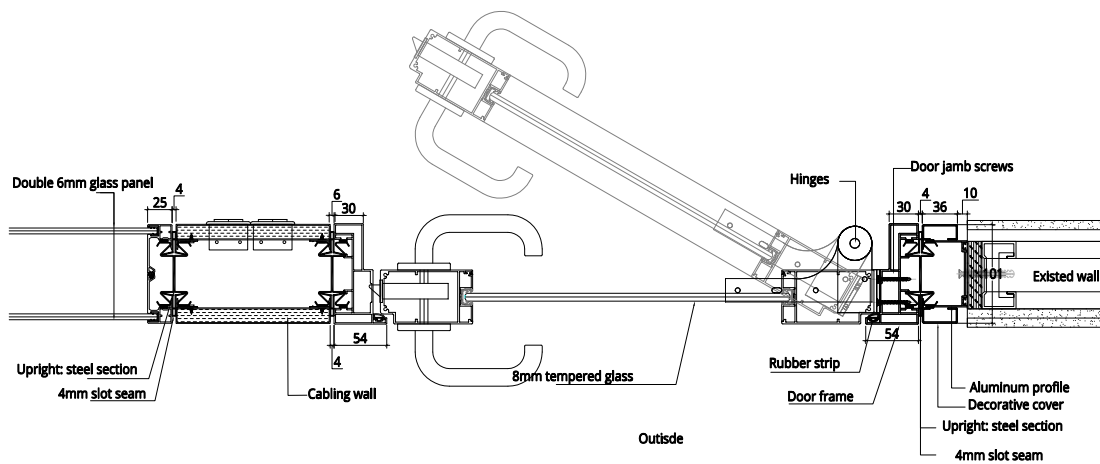
APS-28

Products specifications are subject to change. Please consult latest catalogue for up-to-date details.

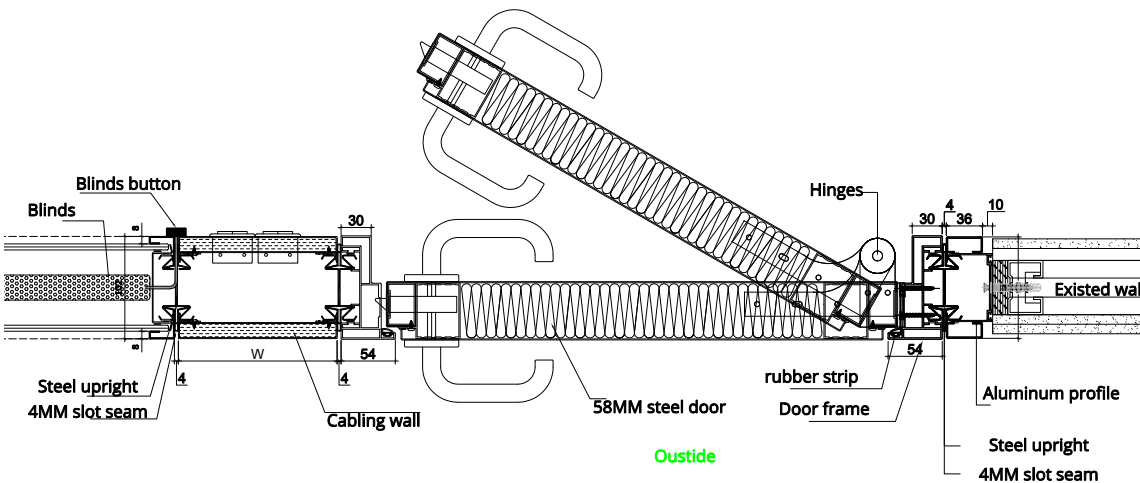
Colors above are for reference only. Printed colors may differ, please consult the actual products.

# CONSTRUCTION DETAILS

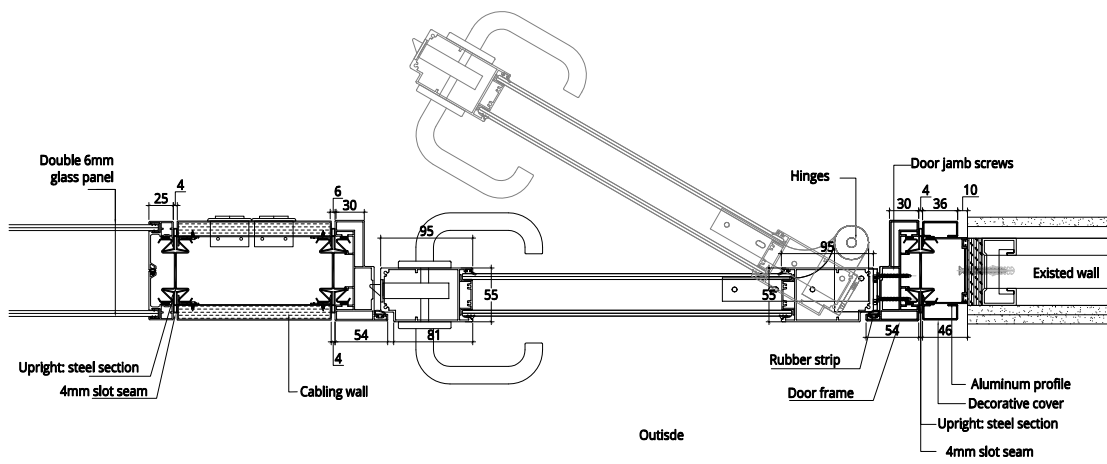
FRAMED SINGLE GLASS DOOR



STEEL DOOR



FRAMED DOUBLE GLASS DOOR







# POD

Pods provide an on-demand soundproof workplace, designed with individual work-sessions and collaborative meetings in mind. They include comfortable seating, a table, clothes hanger(s), two power sockets and many optional add-ons to create a perfect mini-office. They are fully moveable, meaning they can easily be moved from one side of the office to the other as needed. Smart LED lighting and ventilation fans ensure optimal comfort.

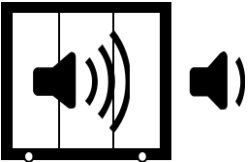


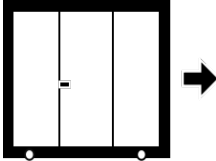
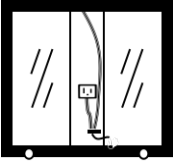





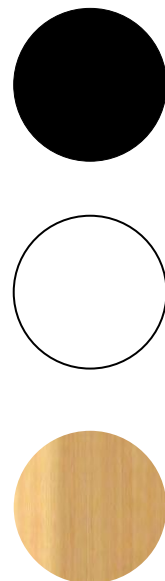
# FEATURES

FlexSpace's pods are a product of countless hours of market research - specially designed with the end user's every need in mind. They bring together the very best in sound insulation, fast assembly, durable materials, and flexibility on the market.

## COMBINING THE VERY BEST IN FORM & FUNCTION.

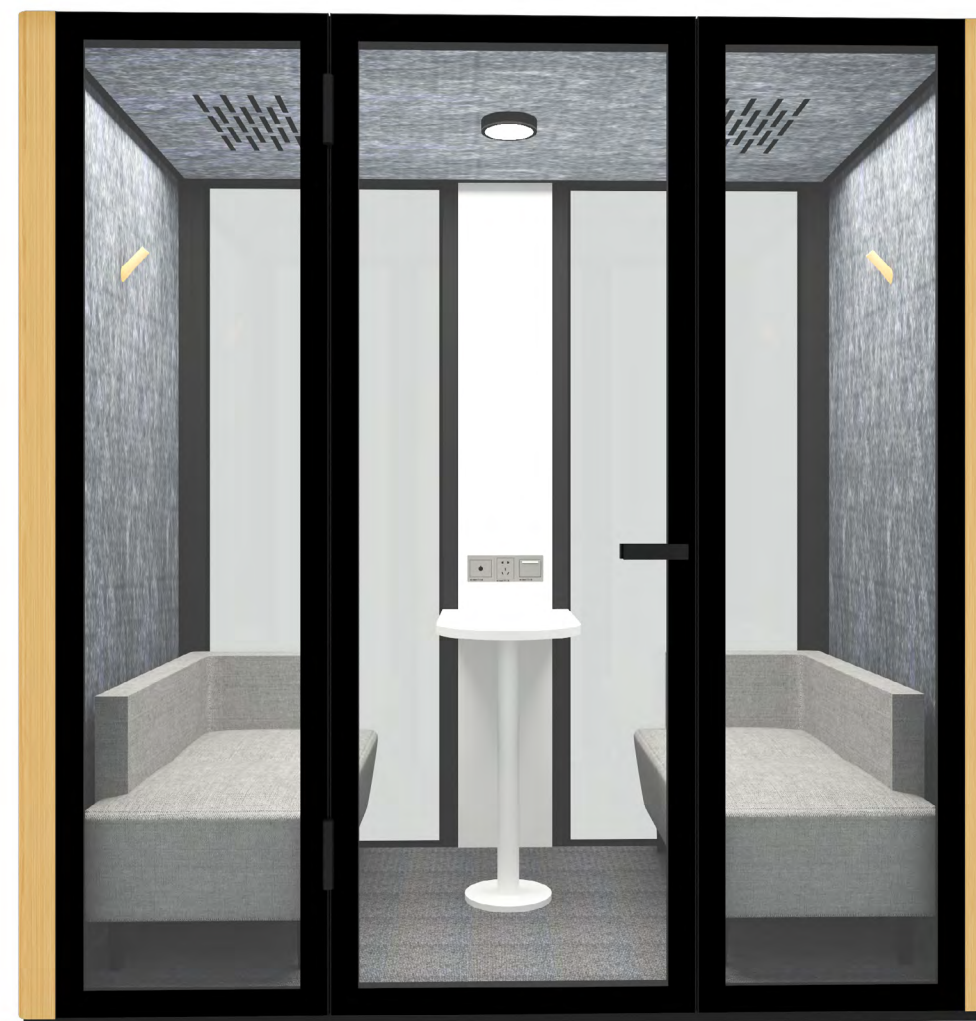
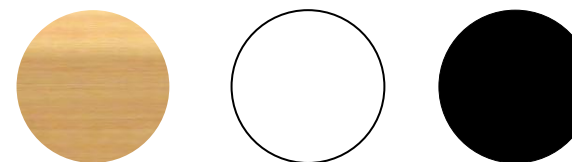
 <p><b>Sound Insulation</b></p> <p>FlexSpace's pods reduce sound by up to 38% to maintain optimal concentration and privacy.</p>	 <p><b>Fast Assembly</b></p> <p>Structure is prefabricated to ensure quick assembly, easy storage and cost savings.</p>	 <p><b>Durable</b></p> <p>Primary materials include metal and safety glass to make pods durable and long-lasting.</p>
 <p><b>Moveable</b></p> <p>Thanks to casters and light-weight design, pods can be moved around with ease.</p>	 <p><b>Easy Maintenance</b></p> <p>Pods are design for optimal compatibility, adjustments and easy maintenance.</p>	 <p><b>Customizable</b></p> <p>Customize colors, design and features including white boards, displays and power options - to fit your every</p>





## / S pod

S pod is a soundproof and acoustic workstation, designed with virtual meetings in mind. It comes with an adjustable stool, table, clothes hanger and two power sockets to offer a perfect mini-office. Smart LED lighting and air circulation ensure optimal comfort.



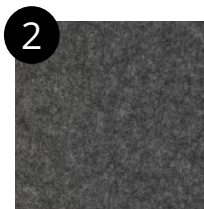
## / M pod

The M Pod is suitable for up to two people and is ideal for one-on-one meetings. It includes two sofas, a desk, and add-ons. Moreover, it is moveable, meaning it can easily be moved from one side of the office to the other as needed. Smart LED lighting and four ventilation fans ensure optimal comfort.



## Exterior

Standard: Precoated or PVC surfaced steel panel wall with safety glasses on both sides .  
Optional: Dry-erase steel panel.



## Interior

Standard: grey acoustic panel with magnetic surface, which is ideal for sound insulation and maintenance.  
Optional: alternative color options



## Hook

Hook for hanging your belongings such as clothes or bags.



## Table

Desktop is designed at optimal height for long, comfortable work sessions.



## Sofa

Ergonomic soft-cushion sofa for ultimate comfort.



## Ventilation fans

Smart ventilation fans offer custom air control for optimal comfort.

## LED lights

Illumination in the pods follows the GSA's recommendation for office spaces. Constant air circulation keeps you feeling fresh and alert.



## Charging station

All electrical components meet CE and UL standard. Standard sockets and USB outlets for charging devices. Optional: CN, UK, USA, Univeral and other countries standard.



## Door

German-designed safety glass door with hidden frame and graphite-textured exterior. Door closes automatically as people enter and exit the pod.

## Adjustable legs

Custom-leveling for spaces with uneven floors.

## Casters

Pod can be easily moved and relocated.



# DATA SHEET

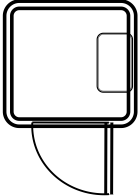
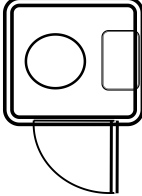
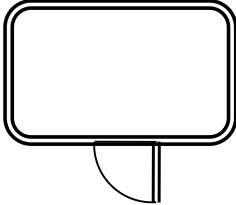
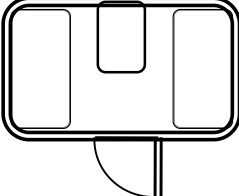
FlexSpace pods are available in two sizes and suit a variety of workspace needs ranging from private phone calls to team brainstorming sessions. Pods can be designed to include custom-fit furniture and/ or be built with a specific space in mind.

FlexSpace pods are designed to be set up and relocated with minimal effort. Casters and modular cable system ensure ease of mobility.

FlexSpace's pod can be customized by:

- Size
- Color
- Door hardware
- Dry-erase board
- Glaze on one side
- Logo Vynils
- Furniture

Feel free to consult us for more customization options.

	 	 
Suitable for	1 person	2~4 person
Dimension		
Width*Depth*Height	1000*1000*2200mm	2200*1200*2200mm
Furniture		
Desk	desktop 230*460mm	- Desk 400*600mm
Seat	- Stool*1	- Sofa*2
Facilities		
Cloth hook	☉*1	☉*2
Light and fan control	Inductive	Manual
Lighting	LED Light (8W /4000K)	LED Light (10W /4000K)
Ventilation Fans	☉*2	☉*4
Charge station	Socket*1, USB*2	Socket*2, USB*2
Package		
Quantity	11	24
Size (L*W*H)	2370*1100*700mm2370*1100*700mm	2370*1100*700mm2370*1100*620mm1070*620*680mm*2
Net weight	240KG250KG	370KG410KG
Gross weight	290KG300KG	440KG480KG
Qty in 20' container	up to 15 sets	up to 8 sets
Assembly		
Person required	2	4
Assembly time	0.5hr	1hr
Relocation time	0.2hr	0.3hr





# COLOR WATCH

# COLOR OPTIONS

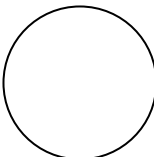
Choose from a wide range of colors to match company colors, add depth to the space or discreetly blend in with existing infrastructure.

## Exterior (steel) color

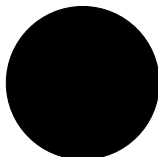
### In-stock options



Nature Wooden



Pure white

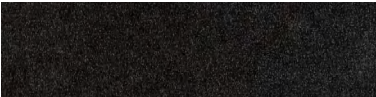


Classic black

### Made-to-order



APS-08  
ILLUMINATING



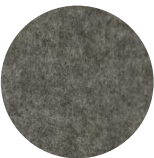
APS-18  
MARBLE BLACK



APS-28  
MARBLE BLACK

## Interior (acoustic panel) color

### In-stock options



Moonlight grey

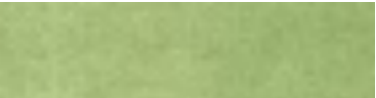
### Made-to-order



APF-06



APF-16



APF-26

Colors above are for reference only. Printed colors may differ, please consult the actual products. Beyond stocked color options, an MOQ is required - please consult us for more details.



# Cube

While employees enjoy an open-office look and feel, studies show that workers prefer concentrating in more private spaces. The Cube combines the best of both worlds - offering a bright and open office with private spaces for collaboration and individual work sessions. The Cube is designed for optimal comfort, efficiency and design.







“  
*On-demand private  
spaces are essential.*”

## Latest Workplace Trends

Studies show that workers want to return to the workplace while retaining the flexibility, privacy and benefits of working from home.

This has important implications for workspace design as it has a critical impact on the performance, comfort, and satisfaction of workers.

In our 2019 report, we identified six “degrees of openness” that bring nuance to the debate on the open-office — and showed that open environments that offer on-demand private space, tend to perform best.

--- Gensler's U.S. Workplace Survey 2020

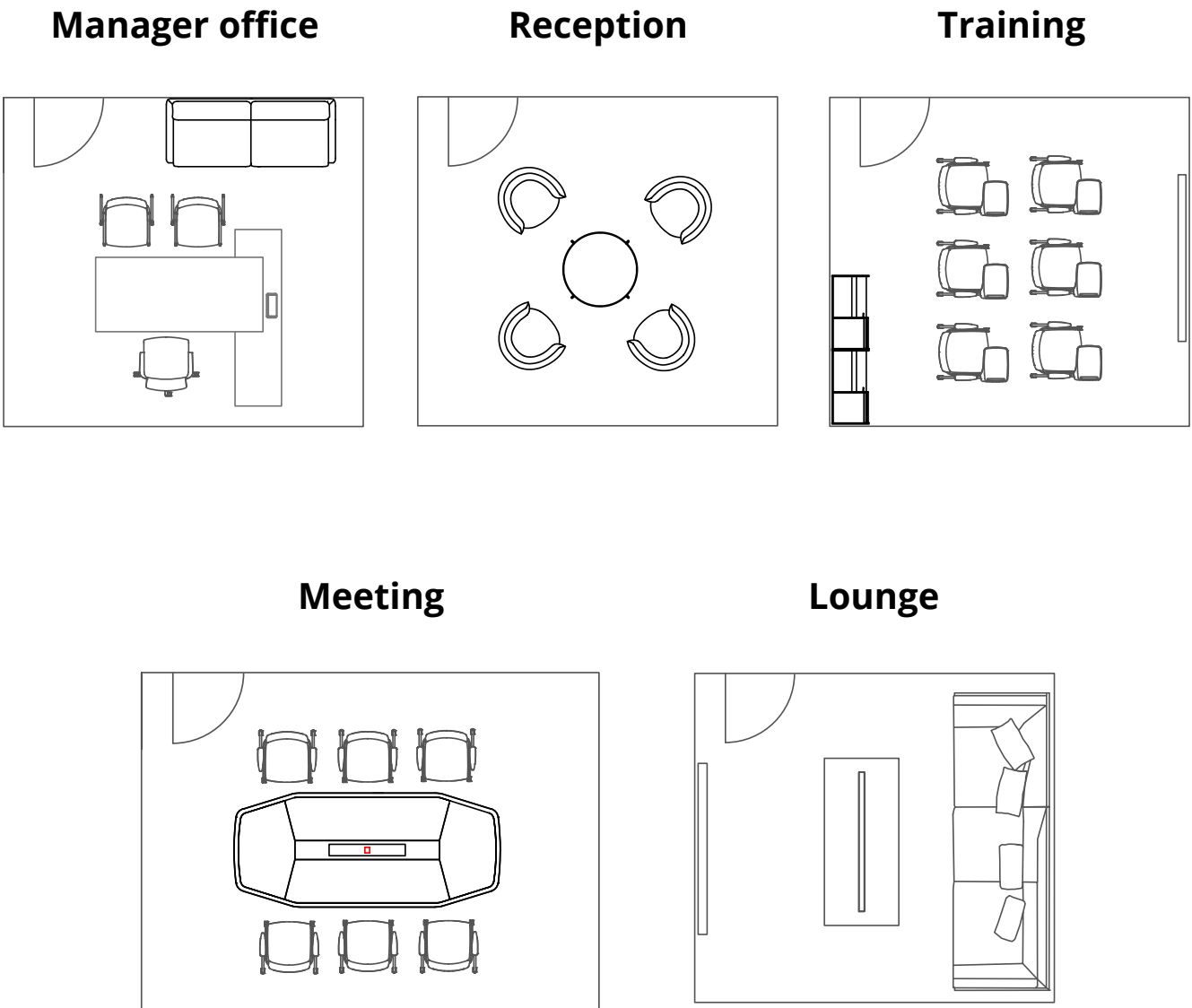


# FEATURES



# SUIT YOUR WISHES

FlexSpace cube is a room-within-a-room system which can easily be integrated into open offices as a place to retreat, concentrate, and collaborate with ease. They are fully customizable and flexible to meet your every office need.



POD

CUBE

PARTITION

INTERIORS



EMAIL

[INFO@FLEXSPACEOFFICE.COM](mailto:INFO@FLEXSPACEOFFICE.COM)

[WWW.FLEXSPACEOFFICE.COM](http://WWW.FLEXSPACEOFFICE.COM)